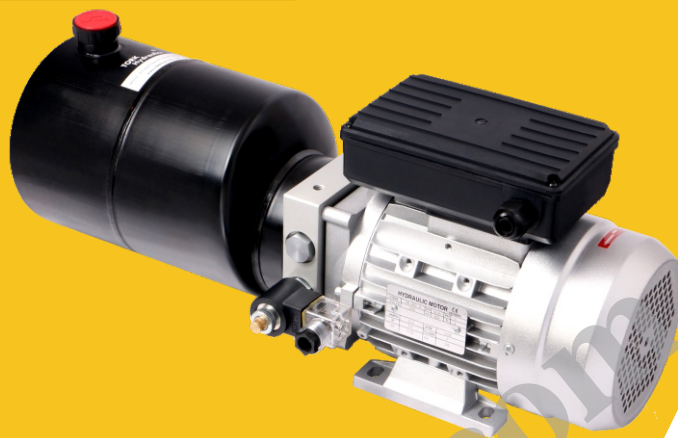
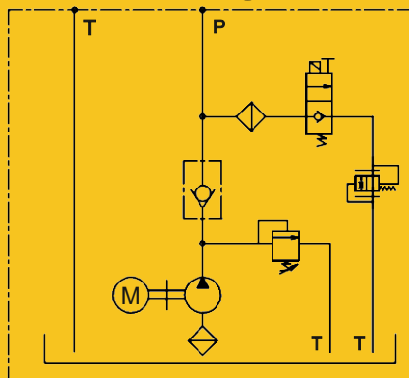


TH1 Compact hydraulic power packs

Circuit diagram



How to order

TH1	- A2 / 2.2		- G2.5	- CV15		
Product type	Electric motor		Gear pump	Oil tank		
Application	Voltage	Power	Displacement	Shape	Mounting	Capacity
Power packs for lift & Industrial	A2: AC220	0.75: 0.75KW	G2.0: 2.0cc/r	R: Round	H: Horizontal	4: 4L
	A3: AC380	1.5: 1.5KW	G2.5: 2.5cc/r			5: 5L
		2.2: 2.2KW	G3.3: 3.3cc/r			6: 6L
		3.0: 3.0KW	G4.2: 4.2cc/r			8: 8L

- P21	G24	M	- 4G
Relief valve	Solenoid valve		Oil port
System pressure	Voltage	Manual override	Thread type & size
P7: 7Mpa	G12: DC12	No code: Standard M: Manual override	4G: BSP 1/4"
P10: 10Mpa	G24: DC24		6G: BSP 3/8"
P16: 16MPa	W110: AC110		4S: SAE 4
P21: 21MPa	W220: AC220		6S: SAE 6

Remark

Please contact us for special requirements such as different motor power & speed, pump displacement, tank material & capacity or oil port type.

Technical data

AC Motor	Speed (r/m)	1500
	Frequency	50Hz
	Duty	S1
	Ingress protection	IP54
	Insulation class	F
Hydraulic fluid		Mineral oil
Seal material		NBR seals
Temperature range (°C)		-30 to +80
Viscosity range (mm ² /s)		2.8 to 500
Oil cleanliness class according to ISO4406		Class 20/18/15

Notes

1. Clean all hydraulic parts before mounting the power pack.
2. First oil changing is after initial 100 hours running time. After that, do oil changing every 3000 hours.

TH1 Compact hydraulic power packs

Capacity 5L

